

URGWOM Middle Valley

Calibration



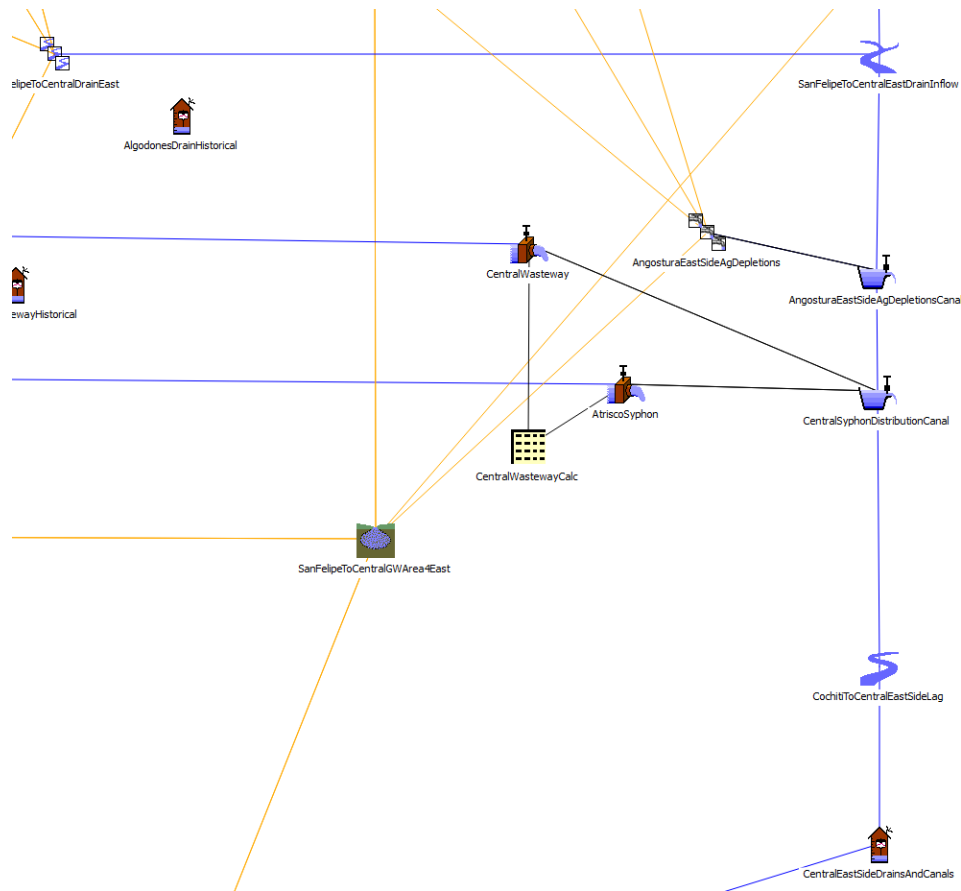
June 18, 2013

San Felipe to Central Changes

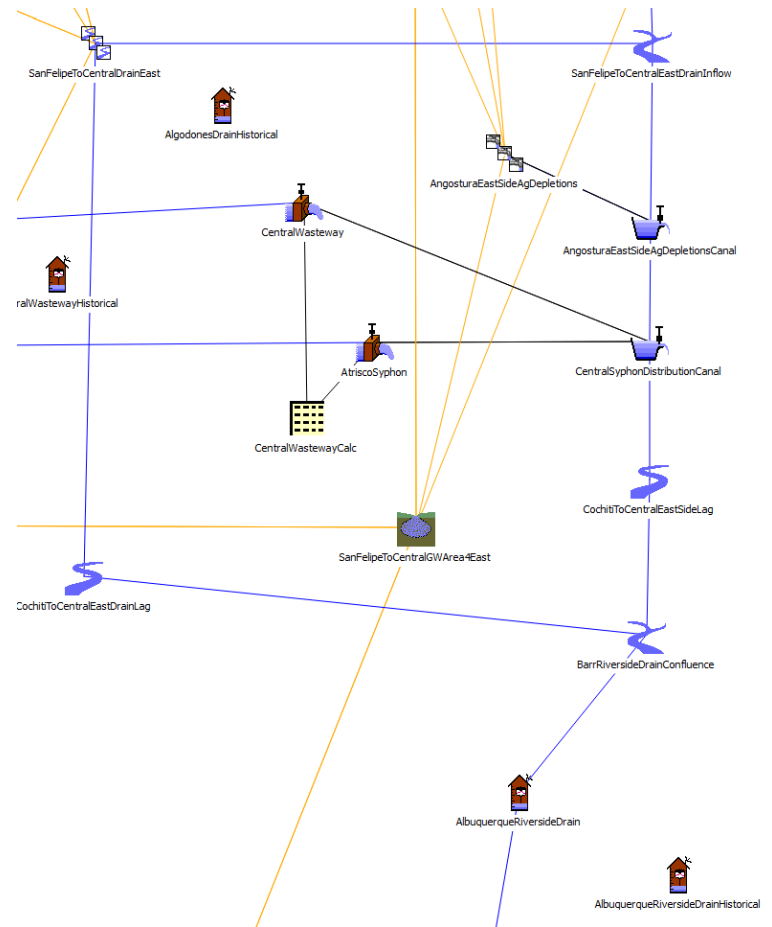
- Previous models had East and West Side Drains and Canals between San Felipe to Central and Central to Isleta.
- Inspection of reach shows:
 - All canal and drain water in east side gaged at Albuquerque Riverside Drain at Tingley
 - All canal flow is gaged at the Atrisco Syphon and drain starts at the syphon.
- Bill compiled data for these two MRGCD gages.
- Found that drain outflow in central reach were not connected to anything. Changed layout.

Change to Layout

Old Model Layout

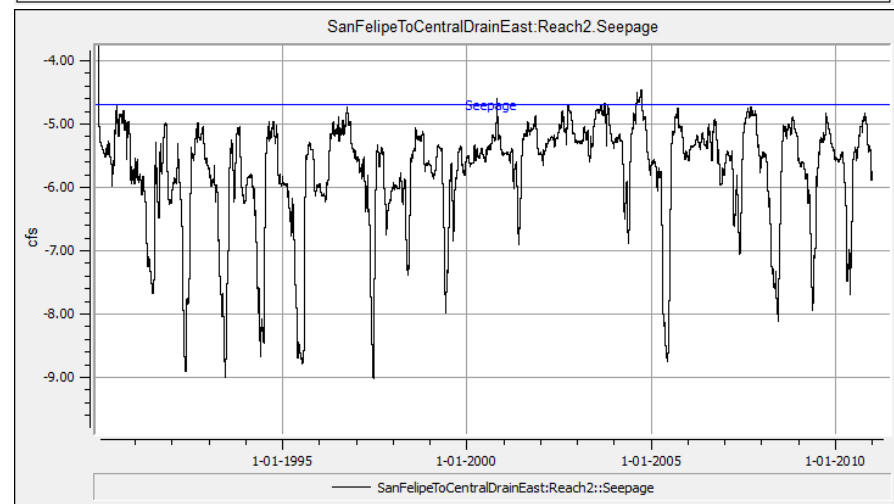
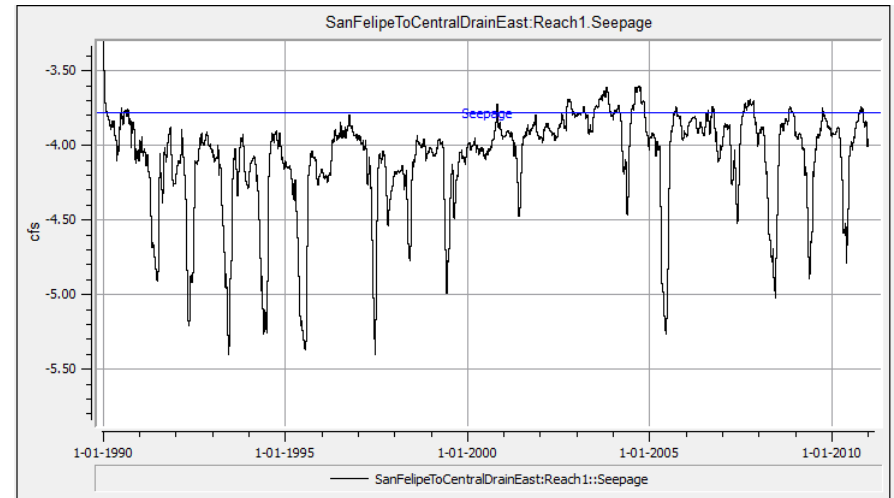
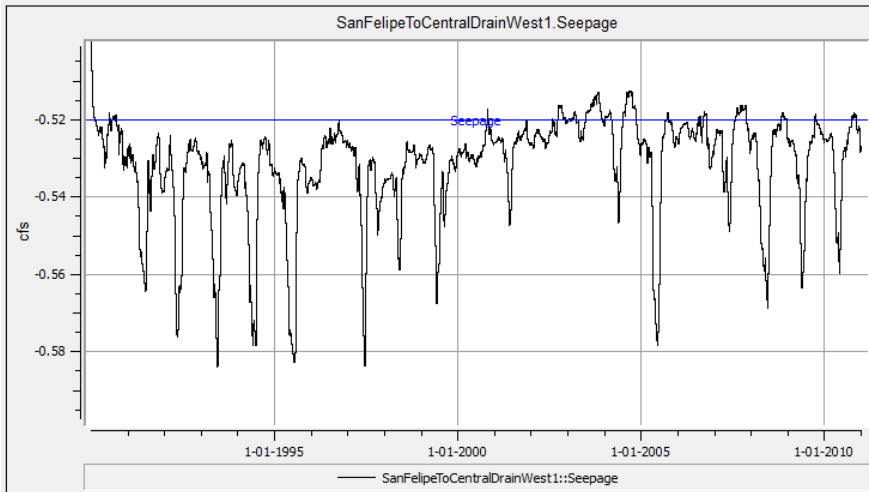


New Layout



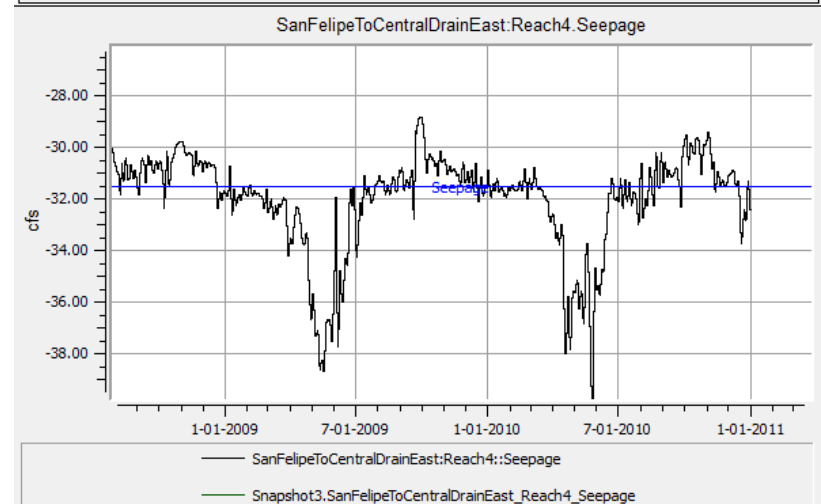
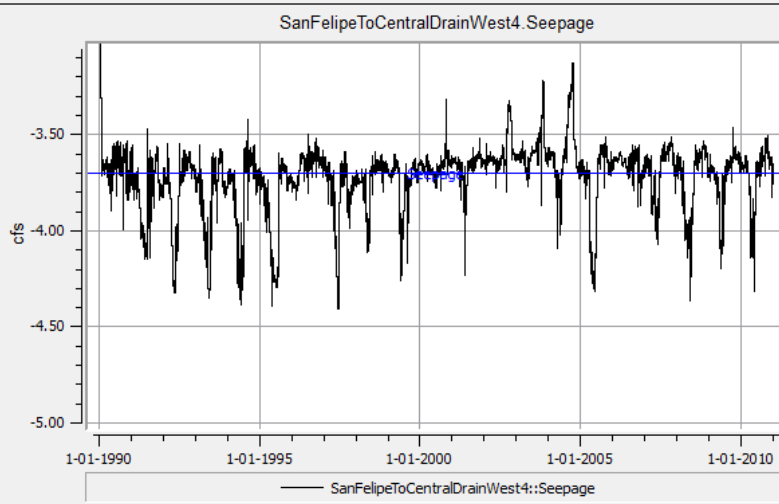
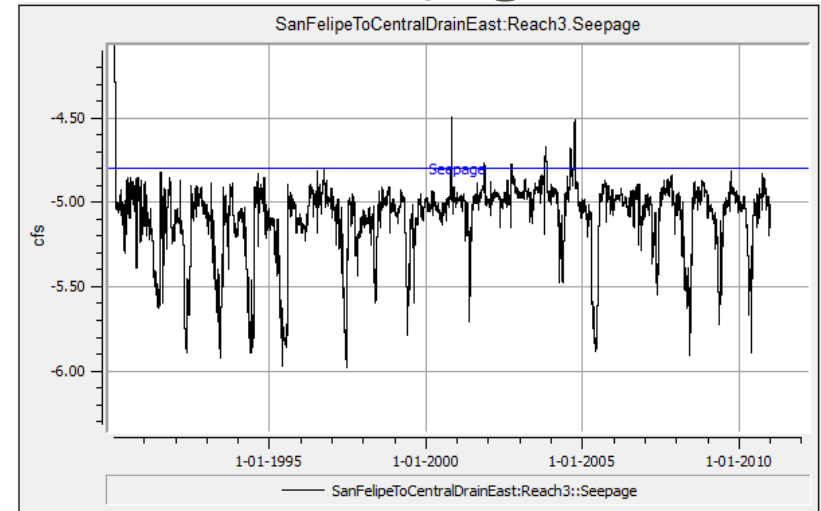
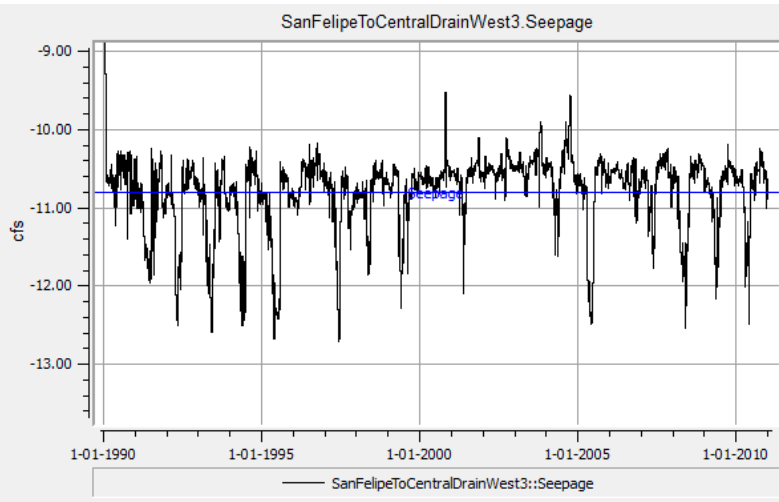
San Felipe to Central Calibration

Drains were adjusted to match measured seepage.



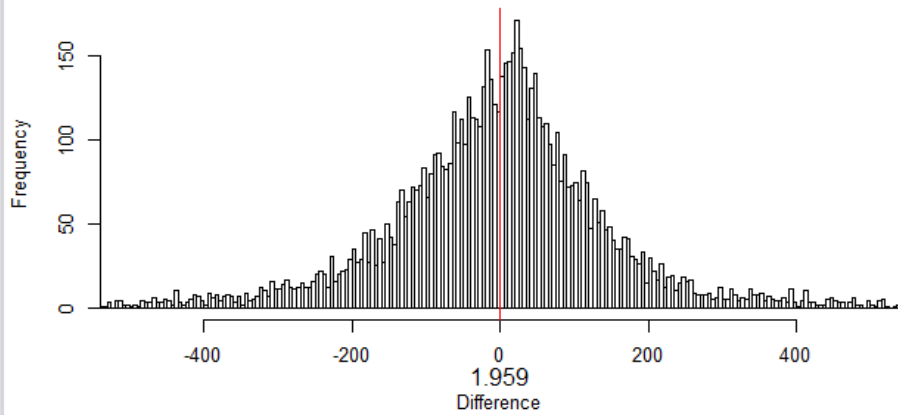
San Felipe to Central Calibration

Drains were adjusted to match measured seepage.

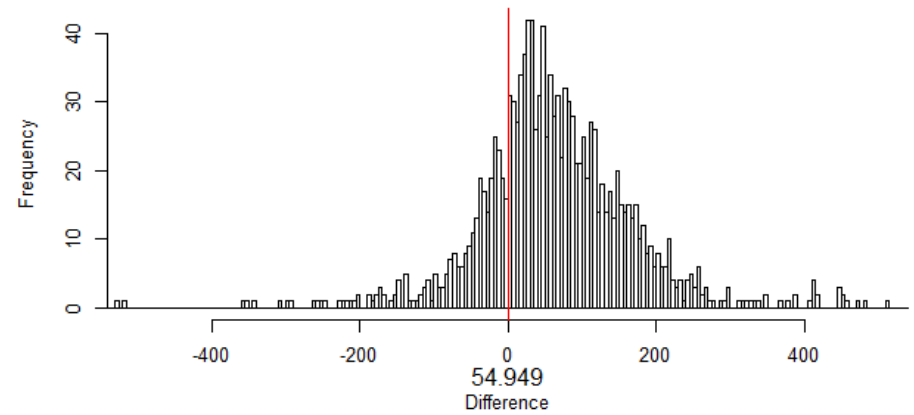


San Felipe to Central

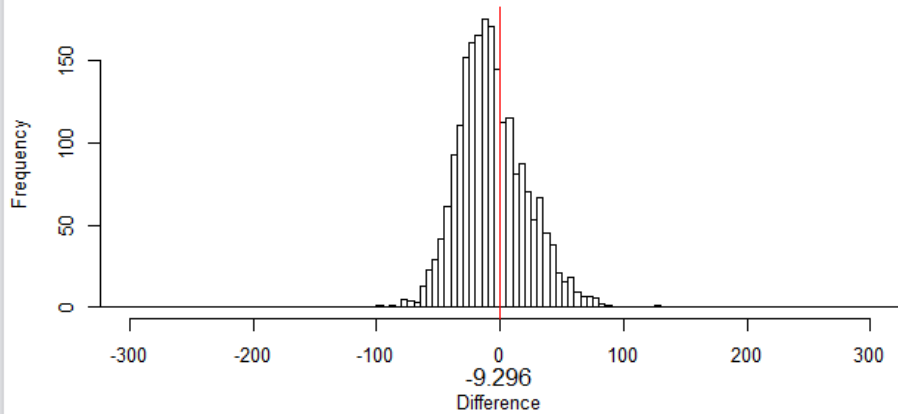
2013-06-17 12:17:35
Rio Grande at Central - All Flow



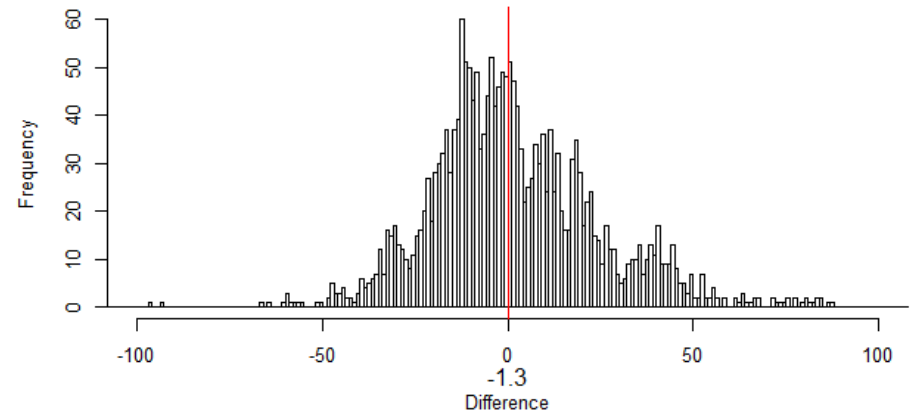
Rio Grande at Central - Low Flow



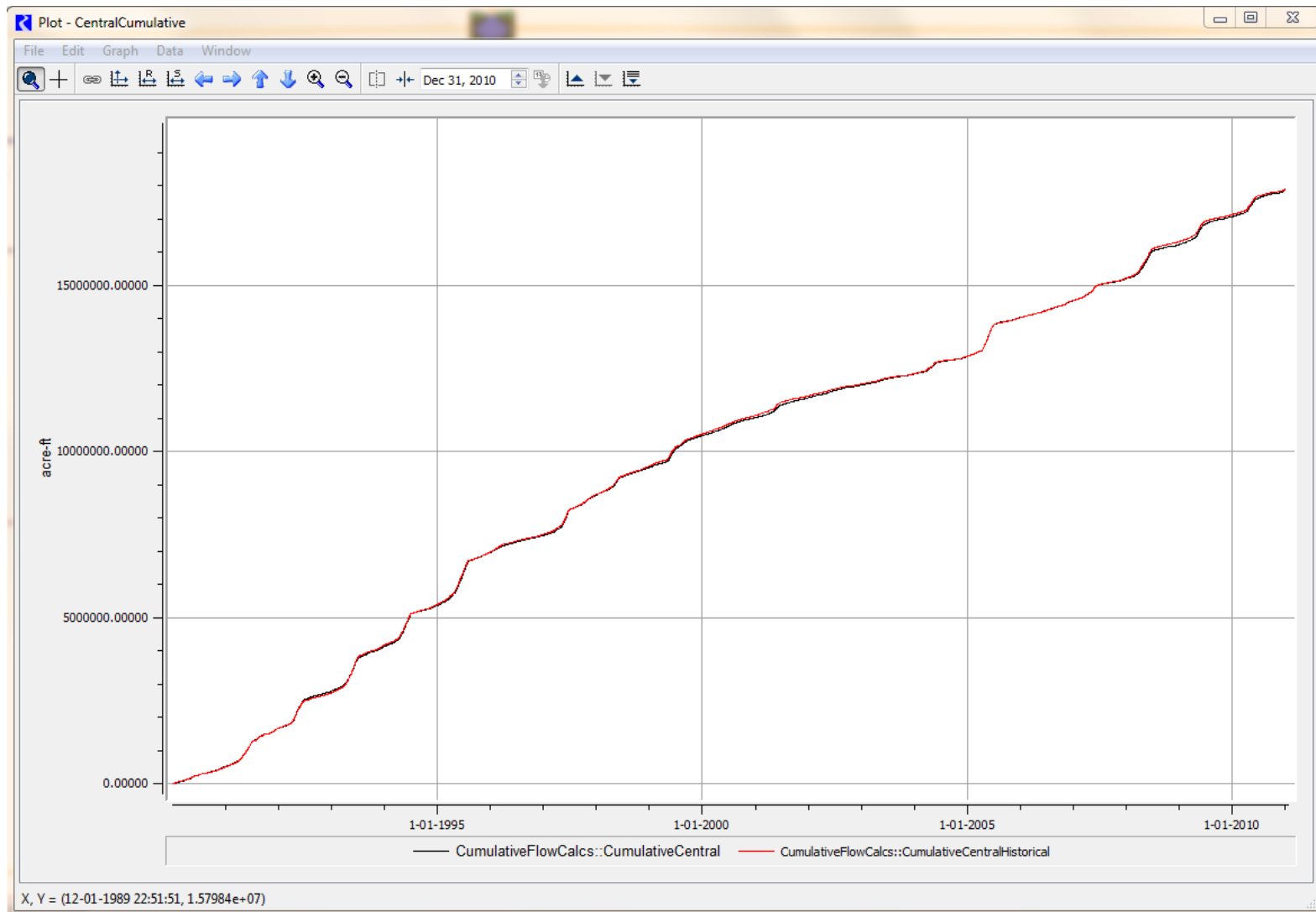
Albuquerque Riverside Drain



Atrisco Syphon



San Felipe to Central Calibration



Future Plans

- ∞ Continue to calibrate San Felipe to Central for Low Flow
- ∞ Next for Mike calibrate Central to Isleta Reach
- ∞ Nabil calibrate Isleta to Bernardo